



LOCAL INVESTMENT JULY 2025

BUSINESS INSIGHT CENTER/CENTRAL LIBRARY OF ROCHESTER & MONROE COUNTY

SOURCE: PITCHBOOK

AVERA

- Avera raised an undisclosed amount in Early Stage VC funding lead by Soma Capital with close date of 01-Jul-2025.
- Developer of an AI research lab designed for cross-industry transformation.
- Early Stage VC: undisclosed amount from Soma Capital
- Industry: Business/Productivity Software
- Location Albany, NY

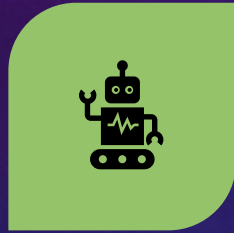
DUB THERAPEUTICS

- DUB Therapeutics raised \$1M in Early Stage VC funding lead by Excell Partners with close date of 22-May-2025.
- Developer of a global life sciences and sourcing platform designed to use self-delivering siRNA technology to improve health and well-being.
- Early Stage VC: \$1M from Excell Partners
- Industry: Biotechnology
- Location: Syracuse, NY

TIMEOS



TIMEOS RAISED AN
UNDISCLOSED AMOUNT IN
LATER STAGE VC FUNDING
LEAD BY MACCABEE
VENTURES WITH CLOSE DATE
OF 01-JUL-2025.



DEVELOPER OF AI-POWERED
PRODUCTIVITY SOFTWARE
DESIGNED FOR AUTOMATING
MEETING FOLLOW-UPS,
CONTENT CREATION, AND
TASK MANAGEMENT.



LATER STAGE VC:
UNDISCLOSED AMOUNT FROM
MACCABEE VENTURES



INDUSTRY:
BUSINESS/PRODUCTIVITY
SOFTWARE



LOCATION: ALBANY, NY

MIMIVAX



MIMIVAX RAISED \$6.28M IN
LATER STAGE VC FUNDING
LEAD BY EXCELL PARTNERS
WITH CLOSE DATE OF 22-MAY-
2025.



DEVELOPER OF
IMMUNOTHERAPEUTIC
VACCINES AND TARGETED
THERAPIES DESIGNED TO
CONTROL TUMOR GROWTH
AND RECURRENCE.



LATER STAGE VC: \$6.28M
FROM EXCELL PARTNERS



INDUSTRY: DRUG DISCOVERY



LOCATION: BUFFALO, NY

OLEDWORKS

OLEDWorks raised \$4.58M in Grant funding lead by NRW.Bank with close date of 24-Jun-2025.

Developer of LED lighting technology designed to bring beauty and unmatched performance into products that change the way people see.

Grant: \$4.58M from NRW.Bank

Industry: Electrical Equipment

Location: Rochester, NY

CONAMIX

- Conamix raised \$2M in Later Stage VC funding from undisclosed investors with close date of 25-Jul-2025.
- Developer of nano-structured silicon advanced battery materials intended to be used in lithium-ion batteries.
- Industry: Electrical Equipment
- Location: Ithaca, NY

The background is a gradient of deep purple and blue, filled with numerous out-of-focus circular light spots (bokeh) in various shades. Overlaid on the left side are several faint, white, semi-transparent circular patterns. These include concentric circles, dashed lines, and a prominent circular scale with numerical markings from 140 to 260 in increments of 10. Some of these patterns have small arrowheads pointing in different directions.

CONTACT US

BUSINESS.INSIGHT@LIBRARYWEB.ORG